



TO LET

COLLEGE SQUARE RETAIL UNITS

Property Highlights

- Excellent retail opportunities within the newly developed College Square.
- There is 1,255 sq.m (13,506 sq.ft) of ground floor retail space available currently divided into 3 units.
- Retail A extends to approx. 67.66 sq. m (728 sq.ft).
- Retail B extends to approx. 869.22 sq. m (9,356 sq.ft).
- Retail C extends to approx. 317.99 sq. m (3,422 sq.ft).
- Quoting rent is available on enquiry.

Property Description

College Square is a modern, sustainable development that combines office, retail, and residential spaces. The development features 50,168 sq.m (540,000 sq.ft) of Grade A office space designed to achieve LEED Platinum certification. It includes 58 high-end apartments and duplexes, offering luxurious living spaces. The property also provides ample bike facilities with 510 bike spaces, dedicated bike lifts, showers, lockers, and changing rooms. Landscaped communal terraces and roof gardens offer relaxing outdoor spaces. The office space is entirely let to Workday which will house their European headquarters.



Contact

Karl Stewart

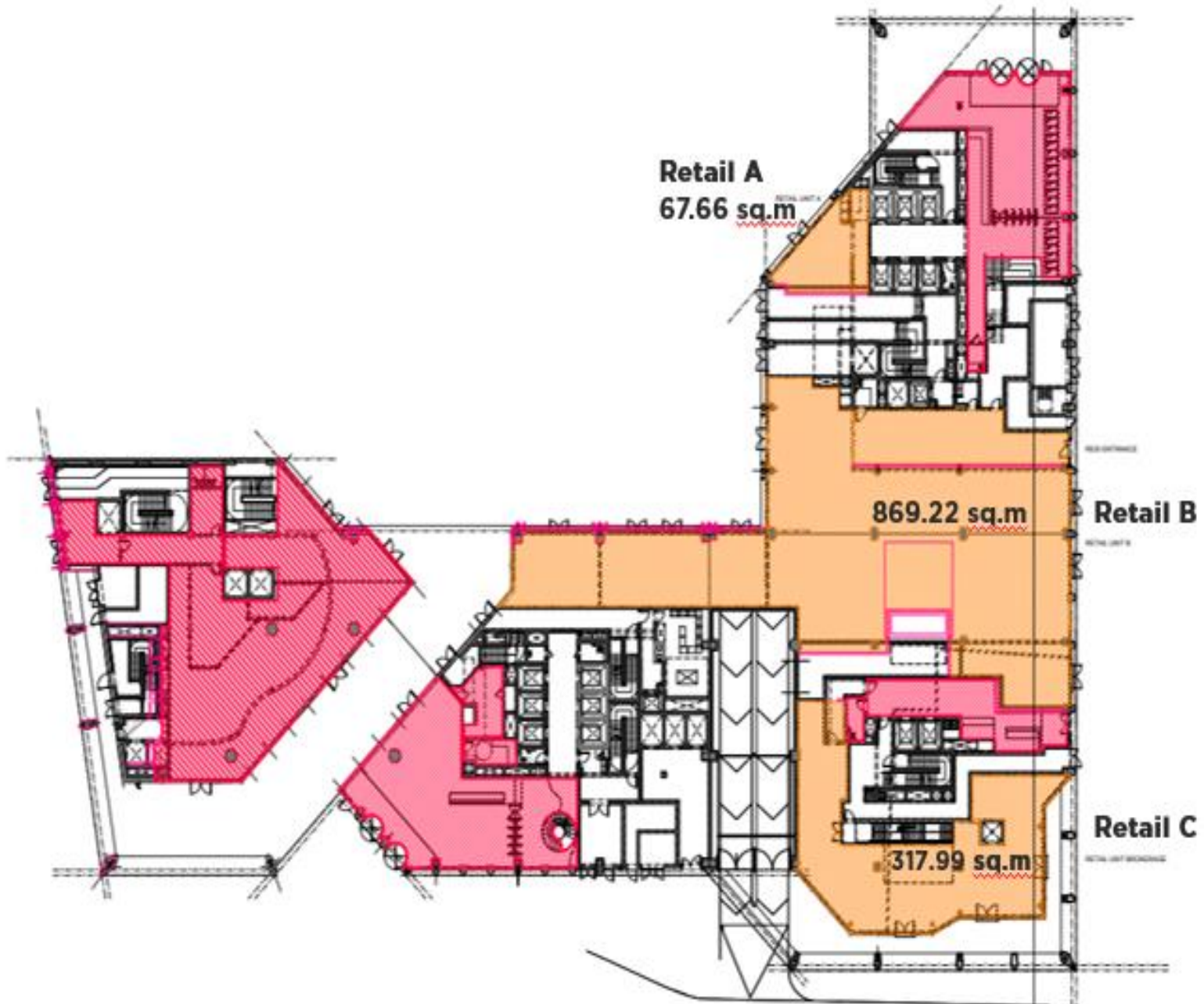
+353 1 639 9347

karl.stewart@cushwake.com**Amanda Dzerve**

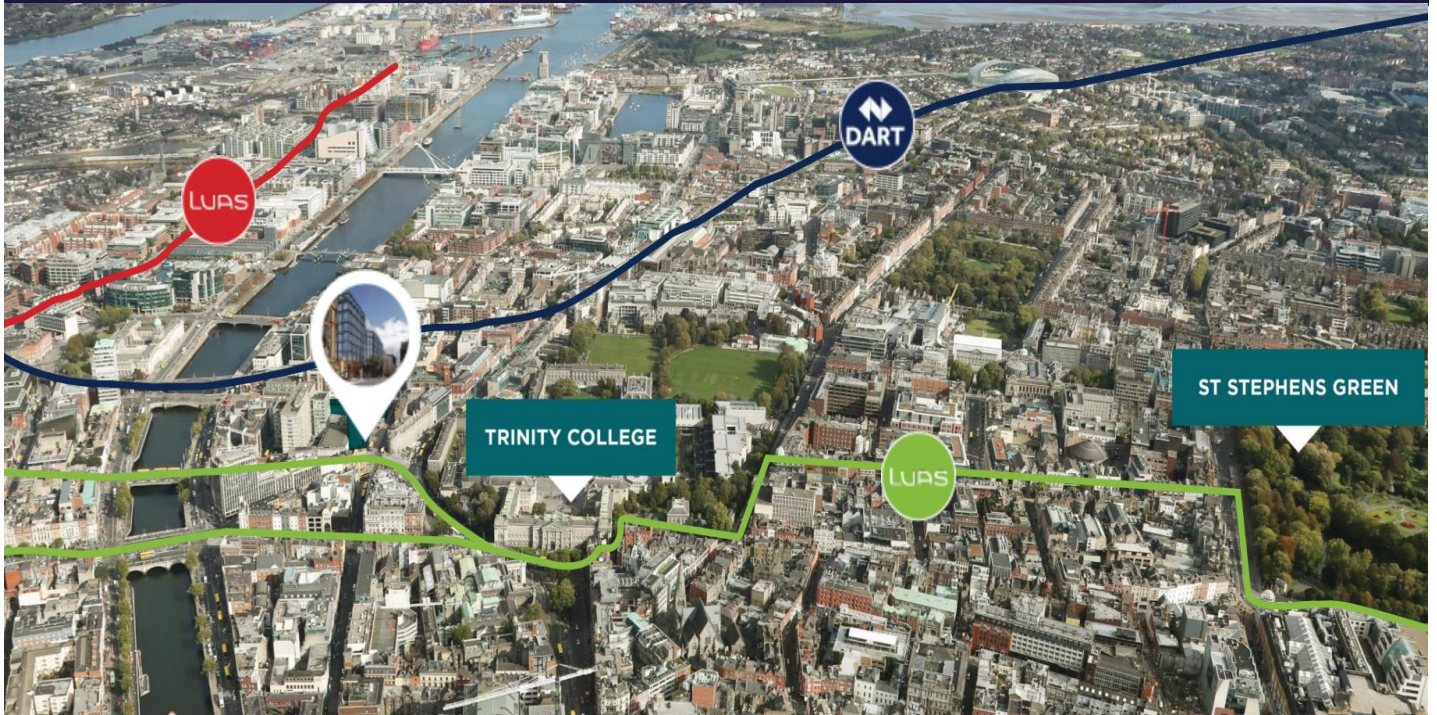
+353 86 066 2841

amanda.dzerve@cushwake.comcushmanwakefield.com





TOWNSEND ST



Location

College Square is ideally located in Dublin 2, at the junction of Tara Street, Poolbeg Street, and Townsend Street. It's just a short walk from Trinity College and St. Stephen's Green, two of Dublin's most iconic landmarks. The development is well-served by public transport, with Tara Street DART station and multiple LUAS stops nearby, offering easy access to all parts of the city. The area is also home to numerous shops, restaurants, and cultural attractions, making it a highly desirable location for both work and leisure.

Schedule of Accommodation

Floor	Unit	SQ.M	SQ.FT
Ground	Retail A	67.66	728
Ground	Retail B	869.22	9,356
Ground	Retail C	317.99	3,422

Insurance

The insurance is TBC.

Service Charge

The service charge is TBC.

Commercial Rates

The commercial rates are TBC.

Quoting Rent

The quoting rent is available on enquiry.

BER **BER A3**